



FISH PASSAGE CENTER

1827 NE 44th Ave., Suite 240, Portland, OR 97213

Phone: (503) 230-4099 Fax: (503) 230-7559

<http://www.fpc.org>

e-mail us at fpcestaff@fpc.org

August 16, 2006

Travis Collier
 Leavenworth Fish Hatchery
 12790 Fish Hatchery Road
 Leavenworth, WA 98826

Dear Travis:

The Fish Passage Center has been marking fish from the Leavenworth Hatchery facility over the last several years as part of the Smolt Monitoring Program (SMP). For purposes of these studies data are collected on either juvenile life stage, or both the juvenile and adult life stages. The SMP provides information for in-season management of the hydrosystem and post-season analyses to the federal, state, and tribal fishery agencies. We would like to share with you some of the information we developed under this study for the fish used from the Leavenworth Hatchery facility.

Under the Smolt Monitoring Program, information is collected on the timing and migration speed from the hatchery to McNary Dam.

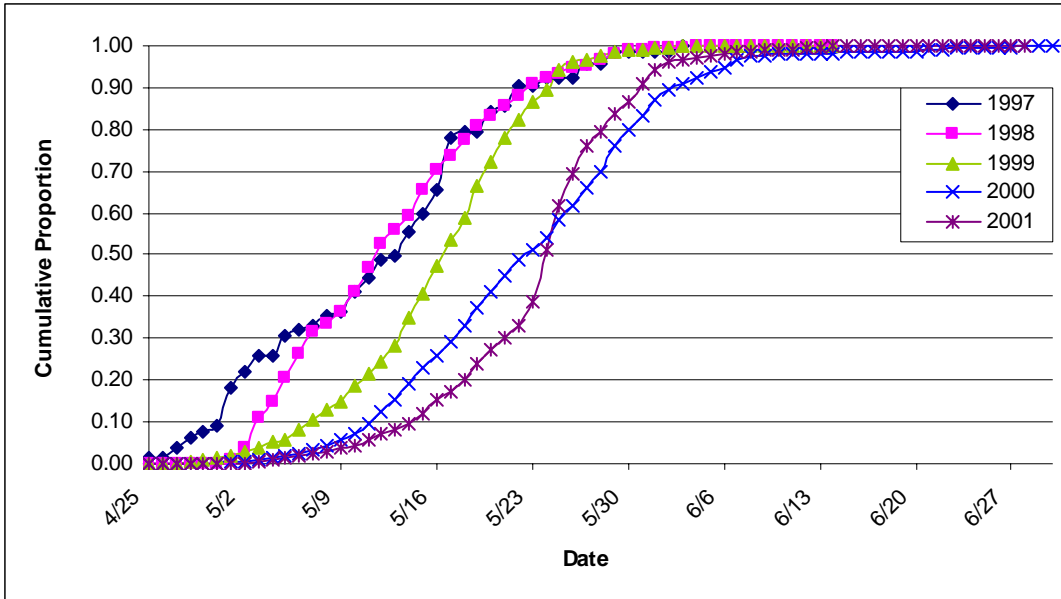
Leavenworth Hatchery Spring Chinook Travel Times

Release Date	Migration Year	Travel Time (Days)			Confidence Limits		Priest Rapids	
		Min	Med	Max	95% Lower	95% Upper	Flow (kcfs)	Temp (F)
17-Apr	1997	8.6	28.7	52.2	22.7	41.8	92	44
20-Apr	1998	10.3	21.7	55.1	21.2	22.2	141.7	50.1
19-Apr	1999	6.8	27.8	55.7	27.3	28.1	171.1	47.1
18-Apr	2000	11.9	36.1	79.2	34.6	36.9	184.7	
17-Apr	2001	11.3	37	72	36.9	37.2	63.8	50.5
22-Apr, 24-Apr	2002	3.6	35.9	64.4	25.9	26	100.3	
21-Apr	2003	5.8	27.6	110.1	27.4	27.7	83.9	
19-Apr	2004	0.1	25.2	107.2	25.1	25.1	104.3	
15-Apr	2005	11.9	29.8	116.7	29.4	30.1		
17-Apr	2006	22.8	28.5	48.2	28.3	28.8	108.2	

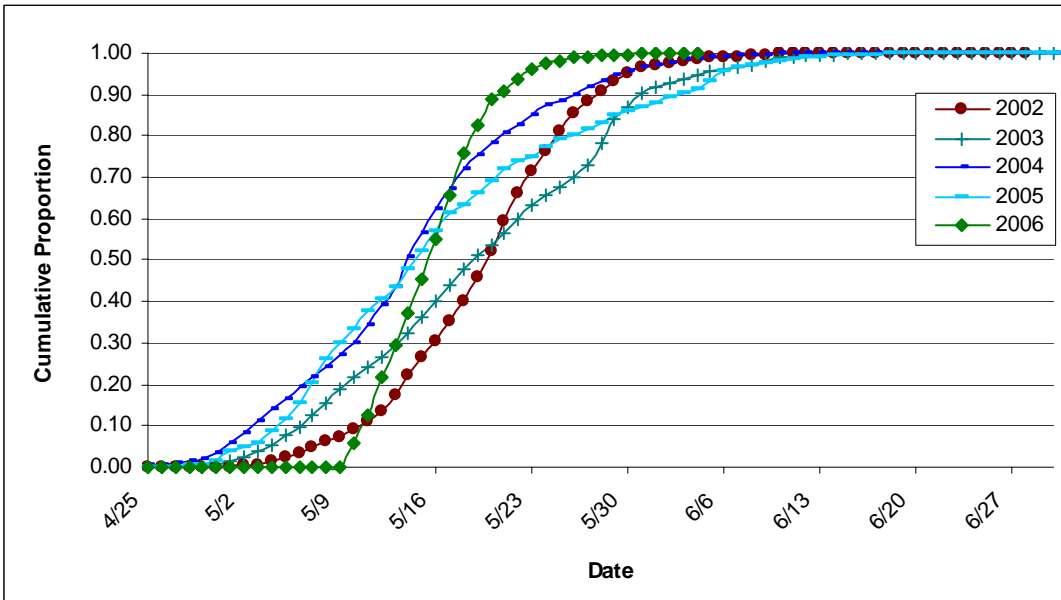
The above table describes the median travel times from each release site to McNary Dam along with the minimum and maximum travel time. It also provides the 95% confidence limits around the estimated median travel time.

We are also providing the following graphs which show passage timing of the hatchery releases to McNary Dam for the past ten years. To better facilitate comparison, we have broken the years into two separate graphs

**Leavenworth Hatchery – Spring Chinook (1997-2001)
Passage Timing to McNary Dam**

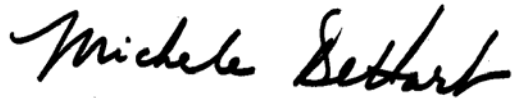


**Leavenworth Hatchery – Spring Chinook (2002-2006)
Passage Timing to McNary Dam**



We hope that the information we have provided regarding the use and application of information from the groups that have been marked at the hatchery over the last several years is of some use to you. If you would like any additional information regarding these releases please feel free to contact us.

Sincerely,

A handwritten signature in black ink that reads "Michele DeHart". The signature is written in a cursive, flowing style.

Michele DeHart
Fish Passage Center Manager

Cc: Charlie Petrosky, IDF&G
Doug DeHart, USFWS
FPAC