



FISH PASSAGE CENTER

1827 NE 44th Ave., Suite 240, Portland, OR 97213

Phone: (503) 230-4099 Fax: (503) 230-7559

<http://www.fpc.org>

e-mail us at fpcstaff@fpc.org

September 25, 2008

Mr. John Hitron
 Carson National Fish Hatchery
 14041 Wind River Highway
 Carson, WA 98610

Dear John-

The Fish Passage Center has been marking fish from the Carson National Fish Hatchery facility over the last several years as part of the Smolt Monitoring Program (SMP) and Comparative Survival Study (CSS). For purposes of these studies data are collected on either juvenile life stage, or both the juvenile and adult life stages. The SMP provides information for in-season management of the hydrosystem and post-season analyses to the federal, state, and tribal fishery agencies. We would like to share with you some of the information we developed under this study for the fish used from the Carson National Fish Hatchery facility.

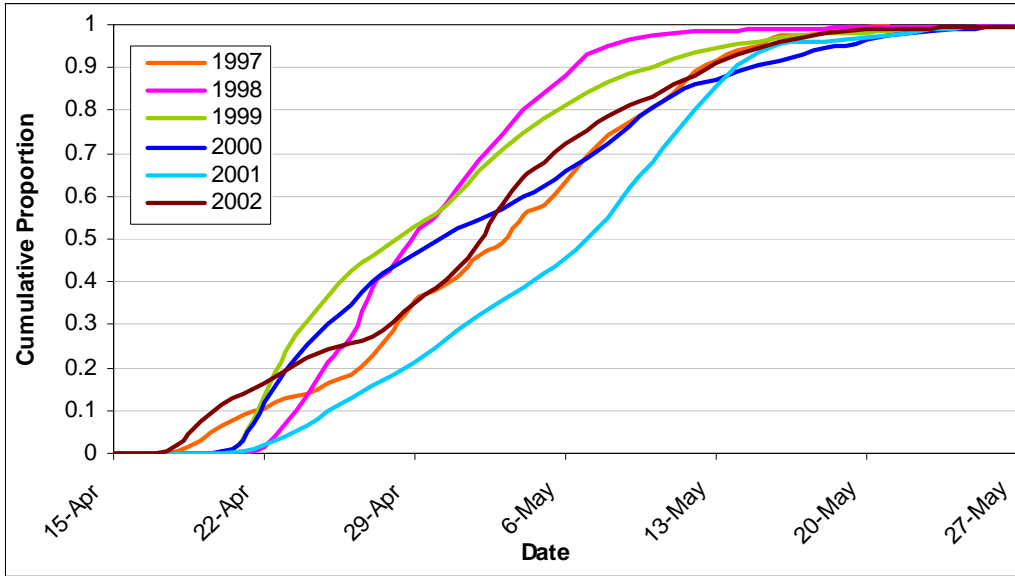
Under the Smolt Monitoring Program, information is collected on the timing and migration speed from the release at the hatchery to Bonneville Dam. Table 1 below provides estimates of minimum, median, and maximum travel times from each year's release to Bonneville Dam. Also provided are estimates of the 95% confidence limits around the estimated median travel time.

Table 1. Carson National Fish Hatchery Spring Chinook Travel Times to Bonneville Dam

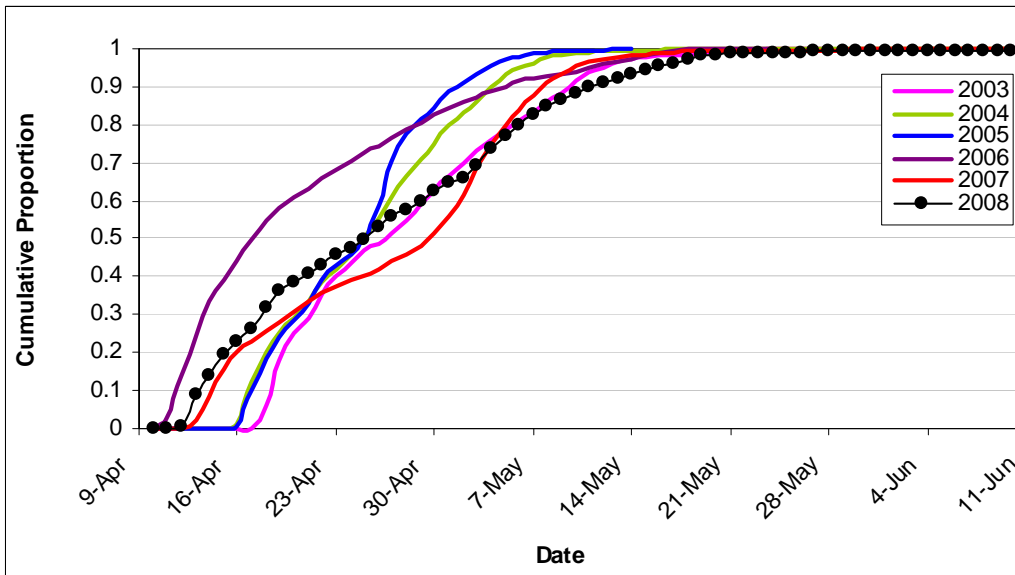
Release Date	Migration Year	Travel Time (Days)			Confidence Limits 95%		Bonneville Flow (kcfs)
		Min	Med	Max	Lower	Upper	
17-Apr	1997	0.66	16.5	33.7	14.6	17.1	
20-Apr	1998	1.7	10.0	38.5	9.6	10.7	
20-Apr	1999	0.8	8.7	94.3	7.8	9.5	198.5
20-Apr	2000	0.9	11.6	41.2	10.7	12.6	192.5
19-Apr	2001	1.6	18.5	130.3	18.3	18.7	127.8
17-Apr	2002	0.7	15.6	76.7	15.5	15.7	132.1
16-Apr	2003	1.2	12.5	42.5	11.6	13	111.8
15-Apr	2004	0.9	10.4	65.9	9.6	10.6	143.8
15-Apr	2005	1.5	11.5	29.3	10.7	11.6	146.7
10-Apr	2006	0.7	7.4	44.3	6.7	8.4	226.2
12-Apr	2007	0.9	17.6	41.6	15.7	18.6	215.7
11-Apr	2008	0.9	17.5	98.3	16.2	18.6	158.4

Also, we are providing figures to illustrate passage timing of Carson NFH spring Chinook to Bonneville Dam over the past several years. To better facilitate comparison, we have broken the years into two separate graphs. Please note the different scales on the x-axis.

**Carson National Fish Hatchery – Spring Chinook (1997-2002)
Passage Timing to Bonneville Dam**

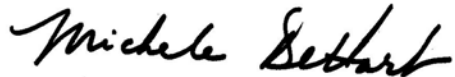


**Carson National Fish Hatchery – Spring Chinook (2003-2008)
Passage Timing to Bonneville Dam**



We hope that the information we have provided regarding the use and application of information from the marked groups over the last several years is of some use to you. If you would like any additional information regarding these releases please feel free to contact us.

Sincerely,

A handwritten signature in black ink that reads "Michele DeHart". The signature is written in a cursive, flowing style.

Michele DeHart
Fish Passage Center Manager

Cc: Pete Hassemer, IDF&G
Doug DeHart, USFWS
Brian Lipscomb, CBFWA
Tony Nigro, ODFW
Ron Boyce, ODFW
FPAC