



FISH PASSAGE CENTER

1827 NE 44th Ave., Suite 240, Portland, OR 97213

Phone: (503) 230-4099 Fax: (503) 230-7559

<http://www.fpc.org>

e-mail us at fpcstaff@fpc.org

December 15, 2011

Travis Collier
Assistant Hatchery Manager
Leavenworth National Fish Hatchery
12790 Hatchery Rd.
Leavenworth, WA 98826

Dear Travis-

The Fish Passage Center has been marking fish from the Leavenworth National Fish Hatchery facility over the last several years as part of the Smolt Monitoring Program (SMP). For purposes of SMP, passage data are collected on both the juvenile and adult life stages. The SMP provides information for in-season management of the hydrosystem and post-season analyses to the federal, state, and tribal fishery agencies. We would like to provide an update of some of the information we developed under this study for the fish used from the Leavenworth National Fish Hatchery facility in 2011 and past years.

Under the Smolt Monitoring Program, information is collected on the timing, migration speed, and survival of juveniles from the hatchery to McNary Dam. Table 1 below provides estimates of minimum, median, and maximum travel times from each year's release to McNary Dam. Also provided are estimates of the 95% confidence limits around the estimated median travel time.

In addition, we are providing estimates of the 10%, 50%, and 90% passage dates of Leavenworth NFH spring Chinook juveniles at McNary Dam for each of the years of tagging (Table 2). Also, Figure 1 is provided as an illustration of how the arrival timing of the 2011 smolt release relates to last year's release, as well as the 10-year average arrival timing (2001-2010).

Table 1. Leavenworth Hatchery Spring Chinook Travel Times to McNary Dam

Release Date	Migration Year	Travel Time (Days)			Confidence Limits 95%		Priest Rapids Flow (kcfs)
		Min	Med	Max	Lower	Upper	
17-Apr	1997	8.6	28.7	52.2	22.7	41.8	92
20-Apr	1998	10.3	21.7	55.1	21.2	22.2	141.7
19-Apr	1999	6.8	27.8	55.7	27.3	28.1	171.1
18-Apr	2000	11.9	36.1	79.2	34.6	36.9	184.7
17-Apr	2001	11.3	37	72	36.9	37.2	63.8
22-Apr, 24-Apr	2002	3.6	35.9	64.4	25.9	26	100.3
21-Apr	2003	5.8	27.6	110.1	27.4	27.7	83.9
19-Apr	2004	0.1	25.2	107.2	25.1	25.1	104.3
15-Apr	2005	11.9	29.8	116.7	29.4	30.1	
17-Apr	2006	22.8	28.5	48.2	28.3	28.8	108.2
18-Apr	2007	7.7	30.8	65.1	30.4	31.2	171.4
28-Apr	2008	3.9	19.9	55.9	19.8	20.1	128.2
28-Apr	2009	8.8	25.4	69.8	24.9	25.7	112.9
23-Apr, 26-Apr	2010	8.1	22.2	50.9	21.9	23.0	104.5
19-Apr, 20-Apr	2011	9.4	28.2	61.5	27.4	28.6	160.9

Table 2. Estimated 10%, 50%, and 90% passage dates of Leavenworth NFH spring Chinook at McNary Dam.

Migration Year	10% Passage Date	50% Passage Date	90% Passage Date
1997	1-May	14-May	22-May
1998	3-May	12-May	23-May
1999	7-May	17-May	25-May
2000	12-May	23-May	3-Jun
2001	15-May	24-May	31-May
2002	11-May	20-May	28-May
2003	7-May	19-May	31-May
2004	3-May	14-May	27-May
2005	5-May	15-May	3-Jun
2006	11-May	16-May	21-May
2007	7-May	19-May	31-May
2008	13-May	19-May	27-May
2009	16-May	24-May	1-Jun
2010	10-May	18-May	2-June
2011	7-May	19-May	29-May

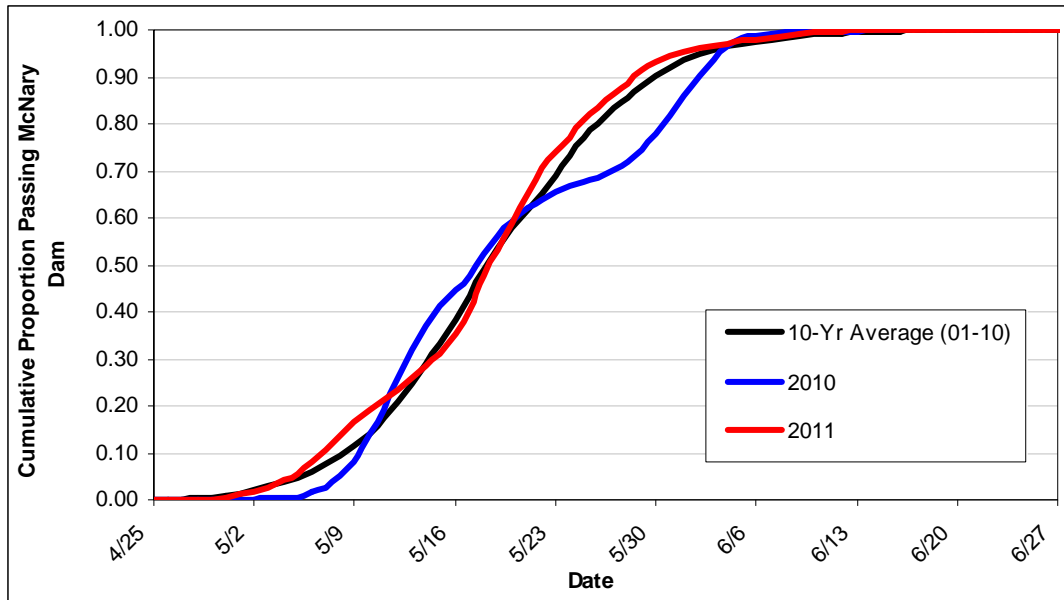


Figure 1. Cumulative passage timing of Leavenworth National Fish Hatchery spring Chinook to McNary Dam.

Finally, Table 3 below provides estimates of survival from release at the hatchery to McNary Dam, along with the upper and lower confidence limits on these estimates. To put out-migration conditions that these spring Chinook juveniles may have experienced in context, Figure 2 provides the total spring flow volume (Apr. 15-June 30) for the Upper Columbia River (as measured at Priest Rapids Dam), along with the average spring spill proportions at each of Rocky Reach, Rock Island, Wanapum, and Priest Rapids dams, for each migration year.

Table 3. Leavenworth Hatchery Spring Chinook survivals (Release to McNary Dam)

Release Date	Migration Year	Survival	Confidence Limits (95%)	
			Lower	Upper
17-Apr	1997	N/A	N/A	N/A
20-Apr	1998	0.546	0.491	0.602
19-Apr	1999	0.586	0.550	0.622
18-Apr	2000	0.593	0.520	0.667
17-Apr	2001	0.501	0.484	0.517
22-Apr, 24-Apr	2002	0.560	0.553	0.567
21-Apr	2003	0.662	0.655	0.669
19-Apr	2004	0.483	0.473	0.494
15-Apr	2005	0.526	0.500	0.553
17-Apr	2006	0.558	0.531	0.585
18-Apr	2007	0.593	0.571	0.615
28-Apr	2008	0.571	0.528	0.614
28-Apr	2009	0.481	0.442	0.520
23-Apr, 26-Apr	2010	0.662	0.603	0.721
19-Apr, 20-Apr	2011	0.426	0.385	0.469

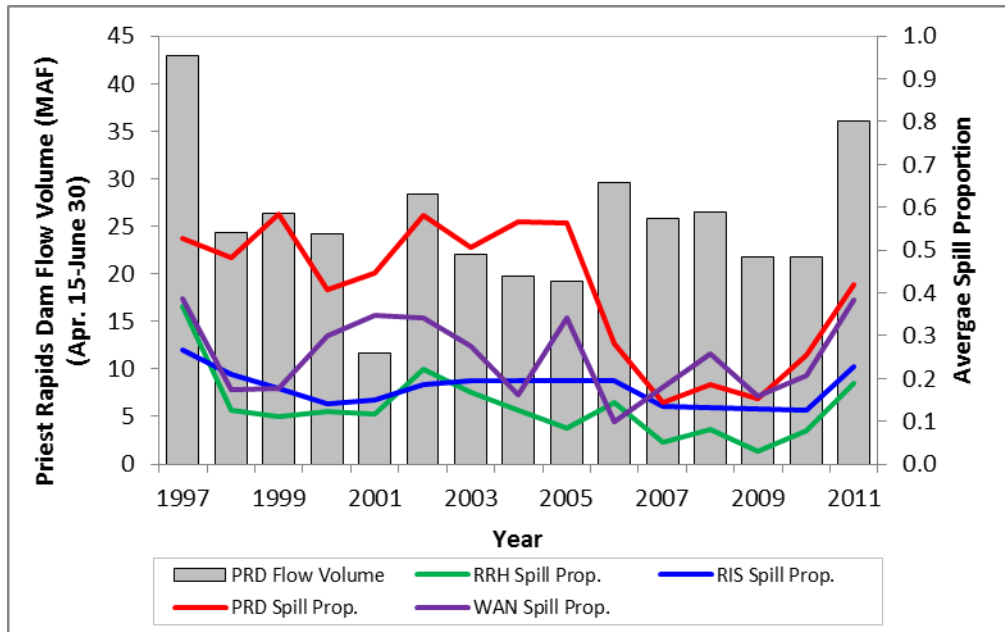


Figure 2. Total spring flow volume in the Upper Columbia River (at Priest Rapids Dam) and average spill proportion at Rocky Reach, Rock Island, Wanapum, and Priest Rapids dams. Spring period is April 15-June 30.

Finally, Table 4 contains estimates of SARs for MCN to BON (without jacks). These SAR estimates were taken from Chapter 6 of the 2011 CSS Annual Report, which can be downloaded from the FPC webpage <http://www.fpc.org/documents/CSS/2011%20CSS%20Annual%20Report--Final.pdf>. Figure 3 is provided to illustrate the time series of the SAR estimates over the years of available data for Leavenworth NFH spring Chinook.

Table 4. Leavenworth NFH Spring Chinook SARs from CSS, as presented in 2011 CSS Annual Report

Release Date(s)	Migration Year	Overall SAR _{MCN-to-BOA}
18-Apr	2000	1.83
17-Apr	2001	0.24
22-Apr, 24-Apr	2002	0.36
21-Apr	2003	0.43
19-Apr	2004	0.34
15-Apr	2005	0.09
17-Apr	2006	0.89
18-Apr	2007	0.46
28-Apr	2008	1.91
28-Apr	2009 ^A	0.45

^A Migration year 2009 is incomplete with Age 2-salt adult returns through 9/12/2011

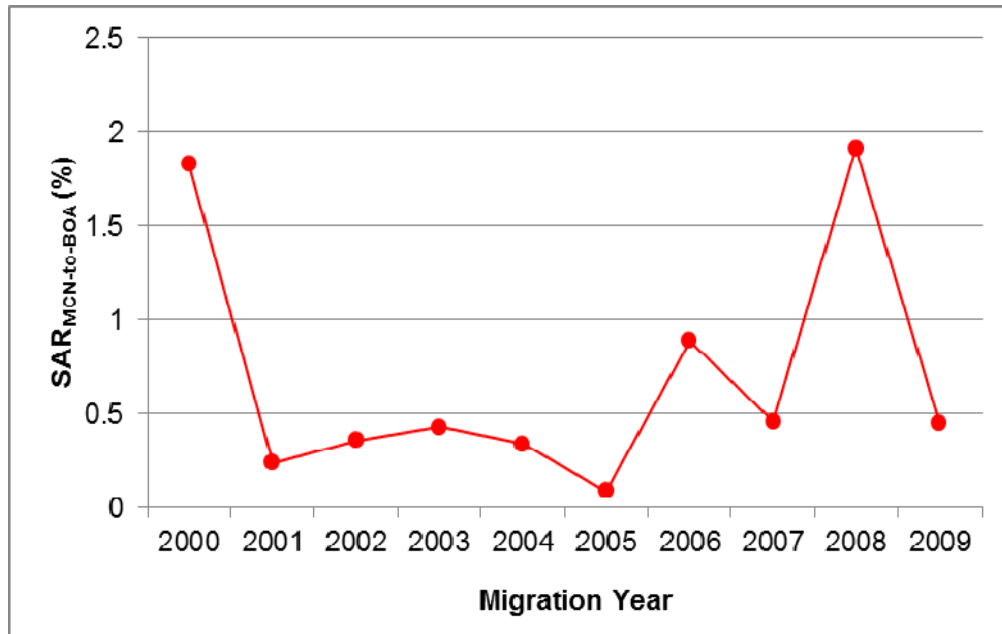


Figure 3. Overall SAR_{MCN-to-BOA} for Leavenworth NFH spring Chinook (2000-2009). Migration year 2009 is incomplete for yearling Chinook, with Age 2-salt adult returns through 9/12/2011.

We hope that the information we have provided regarding the use and application of information from the marked groups over the last several years is of some use to you. If you would like any additional information regarding these releases please feel free to contact us.

Sincerely,

Michele DeHart
Fish Passage Center Manager

Cc: Pete Hassemer, IDF&G
Bill Tweit, WDFW
Jay Hesse, Nez Perce
Tony Nigro, ODFW
Howard Schaller, USFWS
FPAC