



FISH PASSAGE CENTER

2501 SW First Avenue, Suite 230, Portland, OR 97201-4752

Phone: (503) 230-4099 Fax: (503) 230-7559

<http://www.fpc.org>

e-mail us at fpcstaff@fpc.org

MEMORANDUM

TO: Michele DeHart
 FROM: David Benner
 DATE: July 7, 2004
 RE: 1975-2003 Brownlee Drafts

In response to your request, I have reviewed both July and August drafts at Brownlee Reservoir from 1975 to 2003. The following figures illustrate these drafts.

July Draft at Brownlee 1975-2003

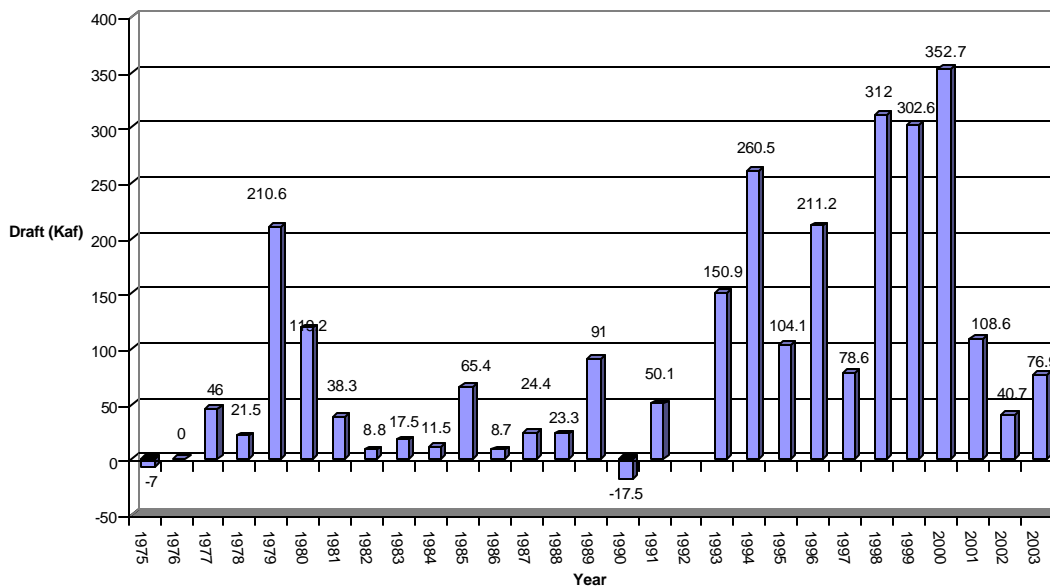


Figure 1. July drafts at Brownlee from 1975 to 2003. Note: 1) July 1992 was missing and 2) July 1st 1985 was missing, so calculated draft was from July 2nd to July 31st.

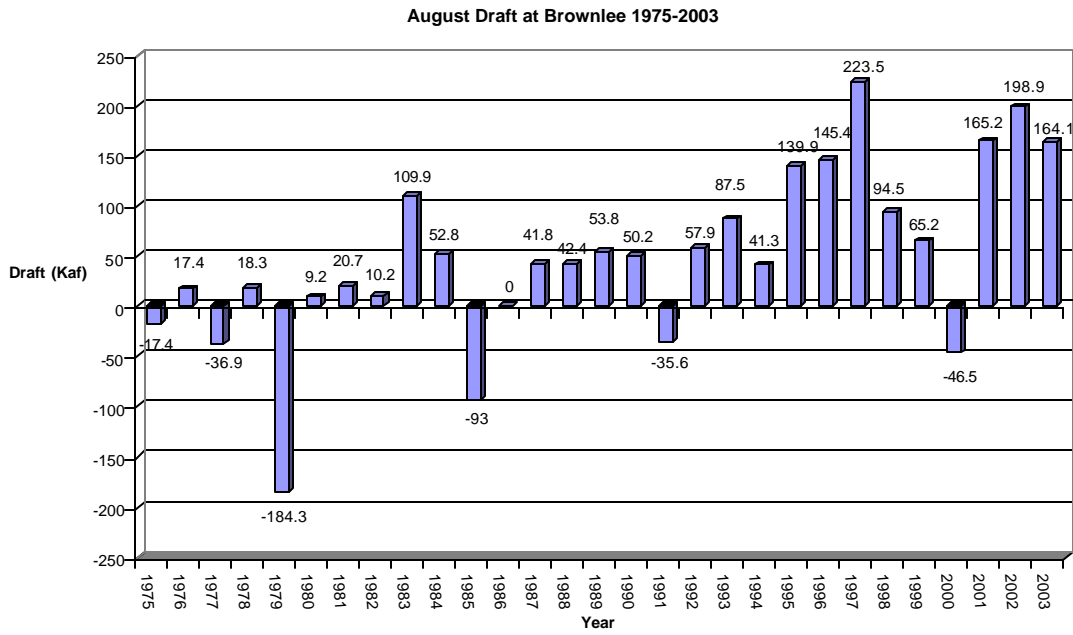


Figure 2. August drafts at Brownlee from 1975 to 2003. Note: August 1st 1975 was missing, so calculated draft was from August 2nd to August 31st.