



FISH PASSAGE CENTER

1827 NE 44th Ave., Suite 240, Portland, OR 97213

Phone: (503) 230-4099 Fax: (503) 230-7559

<http://www.fpc.org/>

e-mail us at fpcstaff@fpc.org

MEMORANDUM

TO: Liz Hamilton

Michele DeHart

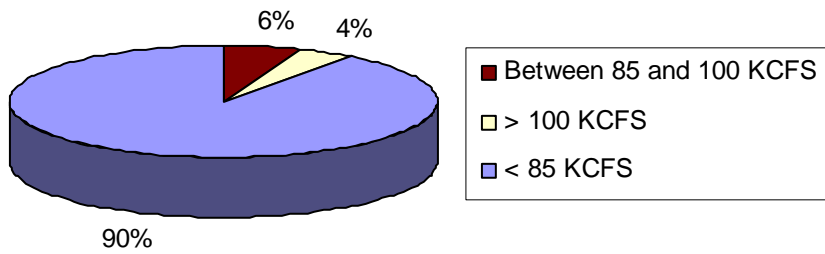
FROM: Michele DeHart

DATE: April 19, 2005

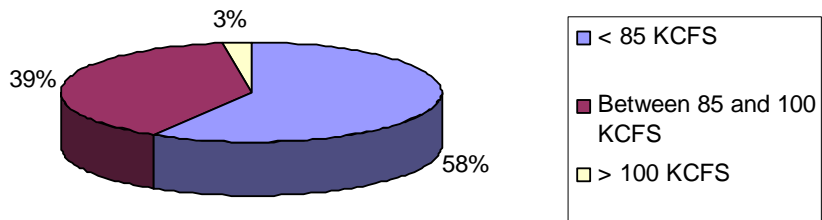
RE: Data Request

In response to your request we have reviewed the outmigration flow conditions experienced by the 2001 and 2005 spring Chinook adult returns. The 2001 returning adults primarily migrated as juveniles during 1998 and 1999. The 2005 adult return would have primarily migrated during 2002 and 2003. The attached graphs show the percentage of juveniles that migrated under the various flow conditions in those years. Feel free to contact us if you need any further information.

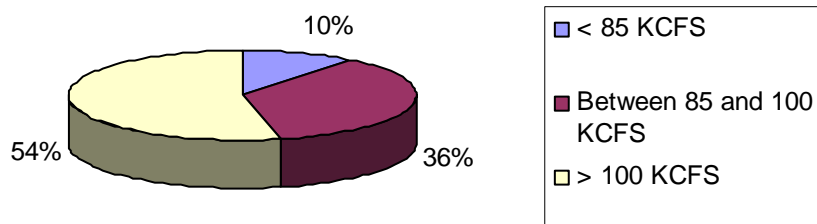
Percentage of 2003 Chinook Yearling Outmigrants Passing Lower Granite Dam at Various Flows



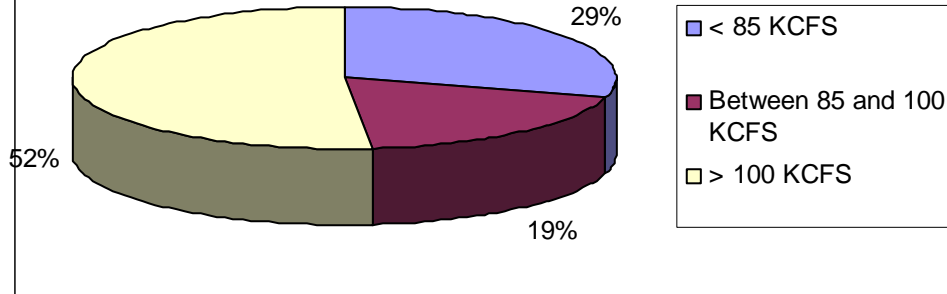
Percentage of 2002 Chinook Yearling Outmigrants Passing Lower Granite Dam at Various Flows



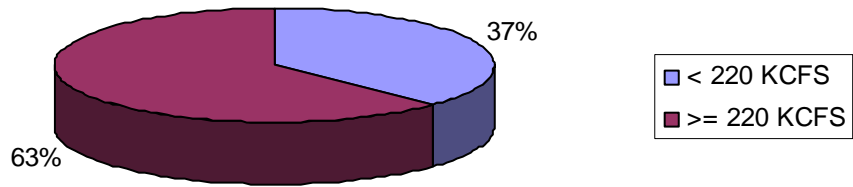
Percentage of 1999 Chinook Yearling Outmigrants Passing Lower Granite Dam at Various Flows



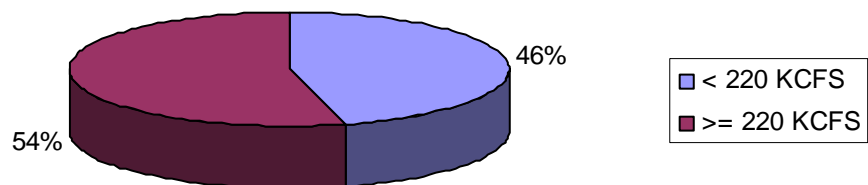
Percentage of 1998 Chinook Yearling Outmigrants Passing Lower Granite Dam at Various Flows



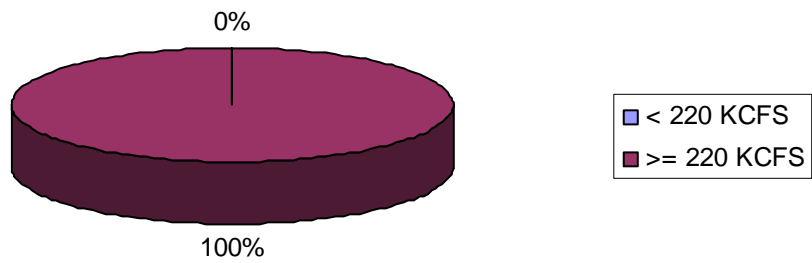
Percent of 2003 Chinook Yearling Outmigrants Passing McNary Dam at Various Flows



Percent of 2002 Chinook Yearling Outmigrants Passing McNary Dam at Various Flows



**Percent of 1999 Chinook Yearling Outmigrants
Passing McNary Dam at Various Flows**



**Percent of 1998 Chinook Yearling Outmigrants
Passing McNary Dam at Various Flows**

