



FISH PASSAGE CENTER
1827 NE 44th Ave., Suite 240, Portland, OR 97213
Phone: (503) 230-4099 Fax: (503) 230-7559
<http://www.fpc.org/> e-mail: fpcestaff@fpc.org

MEMORANDUM

TO: Fish Passage Center Oversight Board
Brian Lipscomb, CBFWA
Randy Fisher, PSMFC

Michele DeHart

FROM: Michele DeHart

DATE: April 22, 2010

RE: Quarterly Fish Passage Center Report for January-March 2010

Following is the Quarterly Report for the Fish Passage Center for the first quarter of 2010. This report follows the format and content agreed upon by the Fish Passage Center Oversight Board (Oversight Board).

Pisces System Work Elements

Produce environmental compliance documentation

The FPC is responsible for acquiring State sampling permits and ESA sampling compliance for the Smolt Monitoring and the Comparative Survival Study. In this quarter the FPC staff completed all of the requirements established by NOAA, for ESA sampling compliance and received a Letter of Determination under the NOAA Biological Opinion, for the conduct of the Smolt Monitoring Program and the Comparative Survival Study in 2010. The Letter of Determination was issued for 2010 sampling after all reporting requirements were satisfied. The states of Washington and Oregon also issued sampling permits for these projects consistent with State requirements after application and reporting requirements were met.

Provide Technical Review

During this quarter in response to requests from the fishery managers the FPC staff reviewed the NOAA analysis entitled, *Analyses of juvenile Chinook and steelhead transport from Lower Granite and Little Goose dams, 1998-2008 (NOAA 2009)*. Comments were provided to the fishery management agencies and tribes and the comments were posted on the FPC website. In addition in response to a request from the Fish passage Advisory Committee the FPC reviewed and provided written comments on the NOAA final report entitled, *Transportation of Columbia River Salmonids from McNary Dam: Final Adult Returns from Hatchery Spring Chinook of 2002-2004 and Hatchery Steelhead of 2003-2005*. The FPC provided the agencies and tribes a summary of TSW and RSW studies conducted to date. In addition FPC staff in response to requests from the fishery agencies and tribes participated in review and provided comments on the 2010 Fish passage Plan.

Analyze/Interpret data

The FPC staff worked on the development of data summaries and analysis for the Comparative Survival Study Annual Review which took place on April 2. The FPC staff began developing the data summaries, graphs, plots and data tables for the FPC Annual Report for 2009. This included Smolt Monitoring Program data as well as environmental factors such as spill, flow and project operations data. The FPC responded to various requests for data analysis and data summaries. The FPC responded to 9 requests for data and analysis, which are listed below.

1. 2010 Water Supply and Snowpack - April 14, 2010
2. NOAA proposed juvenile fish passage operation for 2010 in the Snake River –
March 2, 2010
3. COE proposal regarding increase smolt transportation at McNary Dam –
February 17, 2010
4. Review of the NOAA Transportation analyses and potential effects of reducing spill for fish passage in May and beginning the transportation program earlier in the spring and supporting analyses - February 9, 2010
5. Lower Monumental bypass effects on Snake River Chinook and steelhead –
February 3, 2010

6. Update of Sockeye Memos – Inclusion of 2009 data - January 26, 2010
7. Review of RSW and TSW studies - January 15, 2010
8. Tucannon River Steelhead Straying Behavior - January 8, 2010
9. Juvenile Fall Chinook timing in the Columbia River - January 5, 2010

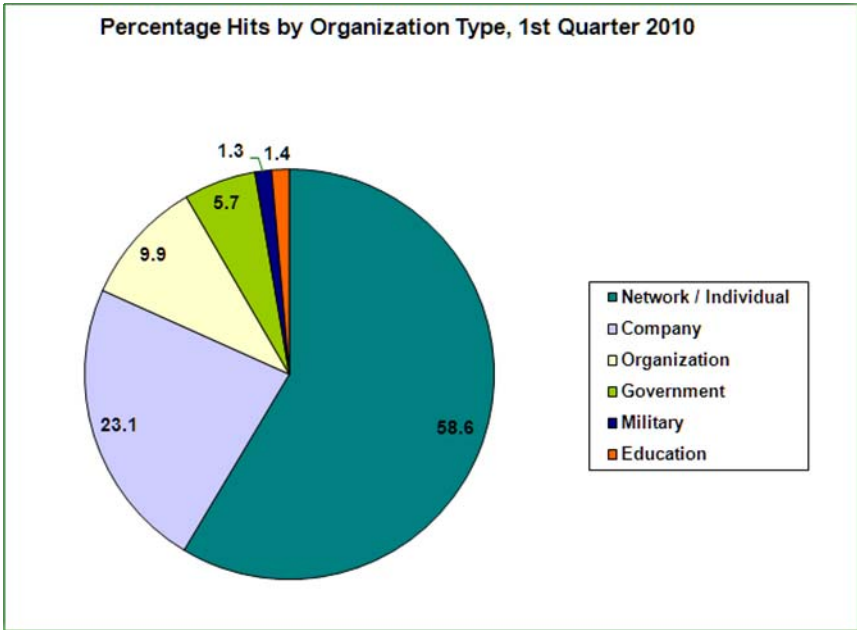
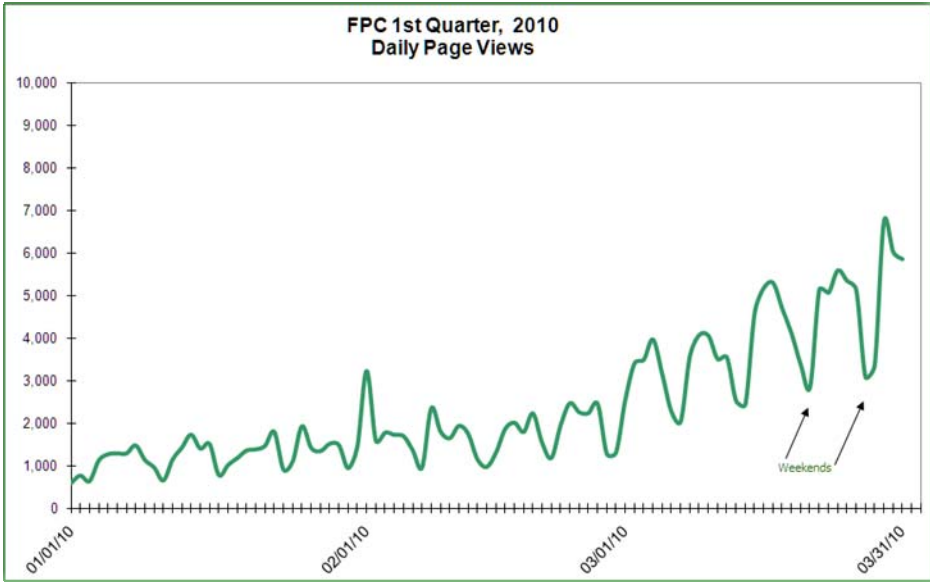
Develop RME methods and designs

The FPC staff continued to provide technical support in the Fall Chinook transportation evaluation committee addressing study design issues for juvenile fall Chinook transportation evaluations. FPC staff also continued to provide technical support in the Fish Passage advisory Committee and the Fish Passage Operations and Maintenance Committee.

The FPC staff committed considerable effort during this quarter to start up of the Smolt Monitoring Program for 2010. This included holding pre season meetings with remote site personnel to review the data collection protocols and data recording protocols for the SMP at various sites. The FPC staff travelled to the remote sites to demonstrate the data entry program and to train site personnel prior to the beginning of the sampling season. On start up of sampling the FPC staff returned to the sites to assist remote site personnel in use of the remote data entry program, in particular the new features of the Program. The FPC staff also conducted GBT monitoring methods training at the sites. Throughout this quarter as remote data entry program “bugs” were discovered they were addressed.

Disseminate raw summary and data results

The FPC website is the primary vehicle for data distribution. The FPC site had 3,151,033 successful hits on our website during the 1st quarter of 2010 which was 1.13 times greater than the 2009 hits of 2,782,925. In 2010, there were 231,932 user sessions which is 16,863 more user sessions than for the same time period in 2009. For the first quarter of 2010, approximately 84.7% of the users were from the United States. Approximately 3.5% of our users were of international origin and about 11.8% were of unknown origin. During the 1st quarter, we averaged 35,011 hits per day with 2,577 user sessions per day. The average user session length was about 6 minutes. The number of unique visitors was 80,307. Of these unique visitors, 66.6% visited once and 33.4% visited more than once. We log all data requests via the web. The number of requests between 1/1/2010 and 3/31/2010 was 27,943. This was 1.4 times greater than the total requests for 2009 of 19,758. The following figures illustrate our website use for the 1st quarter of 2010:

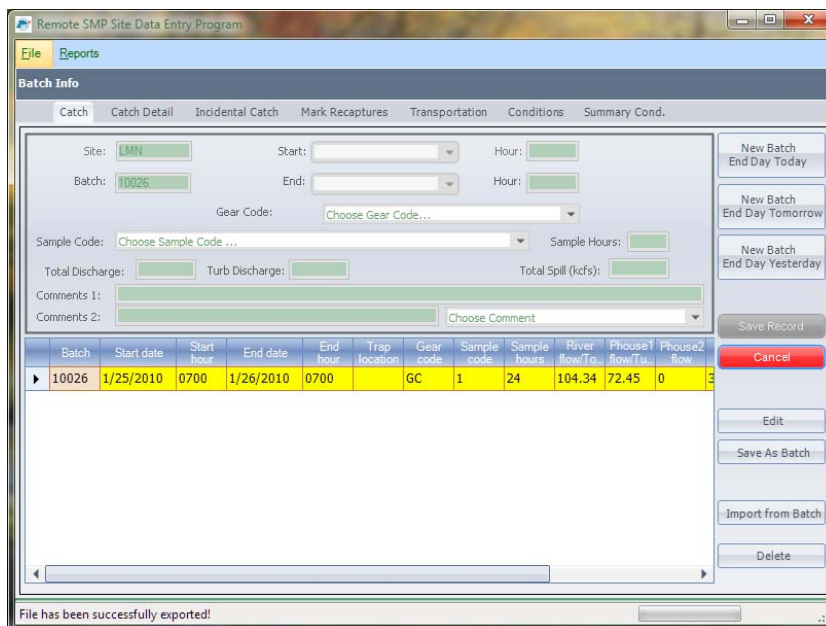


Hardware Upgrades

FPC staff installed an extra T1 line during the first quarter of 2010 due to the increased website traffic that has occurred over the past few years. A new router was also added to our network hardware. Additionally, five new PCs were built for the Data Center. One of the upgraded computers is one of our main data collection engines. A printer was directly attached to this computer, since it is the computer that receives the daily SMP batch files, processes them, prints the reports, and posts the data to our database. Using a networked printer significantly delayed the printing of SMP summary reports. This new printer has greatly reduced this printing time for SMP batches.

Updating SMP data entry program

Development, testing and implementation of the 2010 update of the FPC32.net remote data entry program was carried out during the first quarter of 2010. Staff met with SMP personnel twice prior to deployment of the new program; once at the annual PSMFC meeting and once at an SMP staff meeting in February at the FPC office. Program updates were discussed at these meetings. Additionally, FPC staff traveled to SMP sites for the start-up of sampling for the 2010 season for support on the updated program and tools.

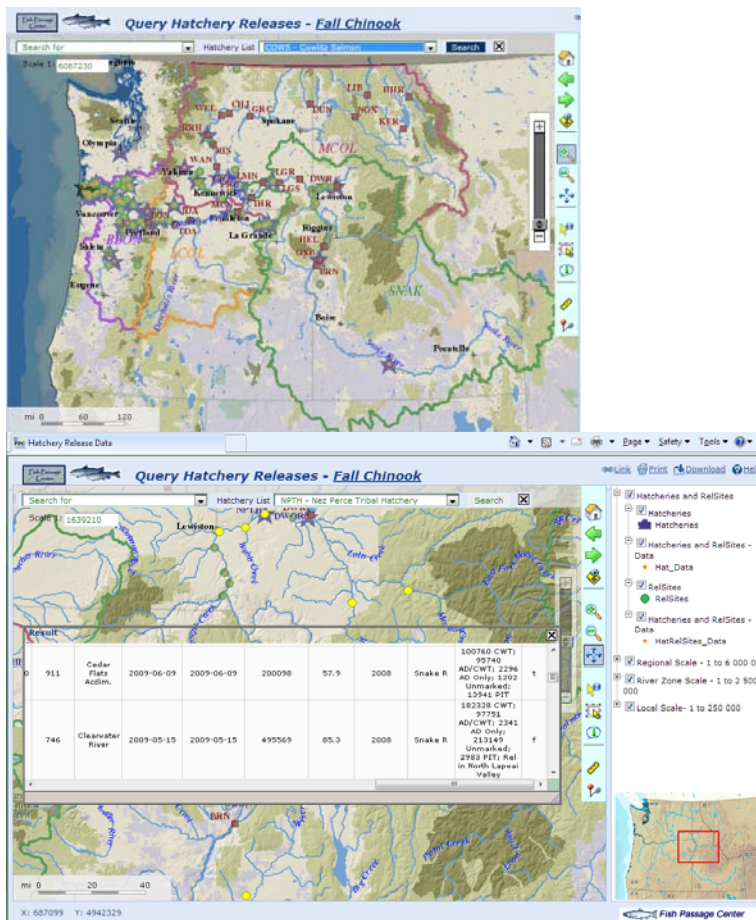


Updated FPC32.net 2010

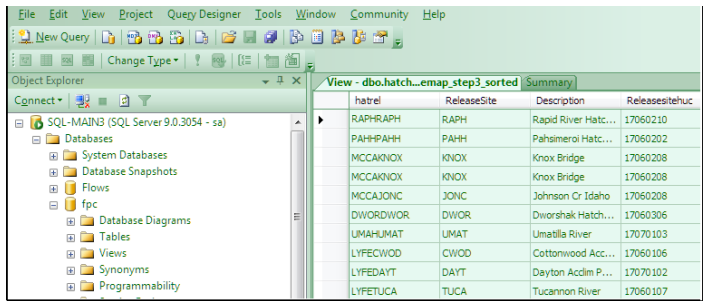
The FPC staff updated the following three documents, provided printed copies to each of the sites and posted the documents on the website.

- (1) SMP Sampling Protocol
- (2) Condition Sampling Protocol
- (3) FPC32.net Data Entry Program Manual

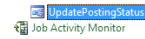
The geographic data for this application is housed in a spatial database, while the hatchery release data are housed in our main MS SQL server database. The FPC staff has developed some tools to connect these two data sources together. Essentially, a copy of the hatchery release data is copied and posted on the web server, making it available to the public and linking it to the hatchery / release site points by linking the tables. The steps involved in this process included: 1) FPC staff created views on the MS SQL server to query the hatchery database for the hatchery release data sorted by hatchery, release site, species, year and number of fish released, 2) FPC staff developed storage procedures and a scheduled job that posts the hatchery release data to the appropriate table in the spatial database on the web server, and 3) The posted data on the web server in the spatial database are joined to the hatchery and release site points through a saved view.



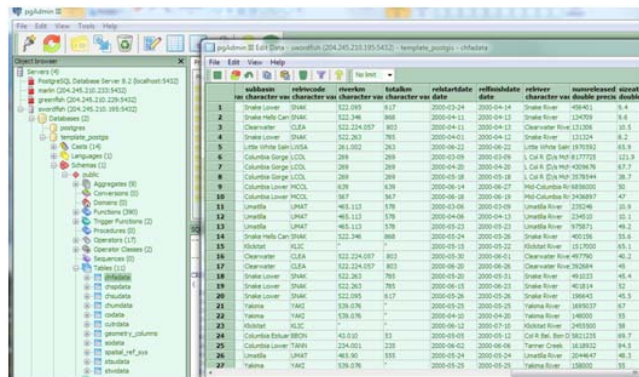
Hatchery and release site Proto-type Web Application



Step 1: Views in MS SQL Server query the hatchery database for hatchery release data sorted by hatchery, release site, species, year, and number released.



Step 2: Storage Procedures called from a twice daily scheduled Job Posts the hatchery release data to the appropriate table in the our spatial database server.



2. FPC staff filled a data request by the Nez Perce development team to assist in the development of an FPC32.net data collection prototype program.
3. FPC staff assisted with Nez Perce SQL server maintenance.
4. FPC staff upgraded the ConsoleImportCOE12highavg application. Developing 12 – Hr Average TDG parsing procedure for a new COE source format.
5. FPC staff developed a new version of Nez Perce data entry program (FishClient 2.2). There are new screen arrangements, as requested.

Panel Setup

Target Catch Panel

Batch: IMN10069 Batch ID: 64

Species: 1 Weight: 1 Fork Length: 0 Number: 1

Details: Text Comments: Mortality

Cond. Comments:

SRRT	WEIGHT	FORK_LENGTH	NUMBER

Record Count: 0

Nez Perce Target Catch Panel

Panel Setup

Batch Info

Batch: IMN10069 Start Date: 3 / 9 / 2010 End Date: 3 / 10 / 2010

of Hours: 24 Sampled: 24

Stream: IMN River km: 007

Trap Pos: 1 Temperature: 2 Flow: 0

Surveyors: JM

LC Stage: 42 Date: 3 / 10 / 2010 Time: 0730

Comments: S1

TCH	STREAM	RKM	START_DATE
IMN10069	IMN	007	3/9/2010
IMN10068	IMN	007	3/8/2010

Record Count: 14

Nez Perce Batch Info Panel

Panel Setup

Incidental Catch Panel

Batch: IMN10069 Batch ID: 64

Species: 1 Weight: 1 Fork Length: 0 Number: 1

Details:

SPECIES	WT	LENGTH	NUMBER
RT	12.7	105	1
RT	89	95	1
JT	106.8	230	1

Record Count: 3

Nez Perce Incidental Catch Panel

Manage and Administer projects

During this quarter FPC staff worked with BPA and PSMFC contracting staffs to close out CSS and FPC contracts for the 2009 contract year. FPC staff worked with BPA, PSMFC and individual state sub-contractors for the Smolt Monitoring Program, to complete Pisces requirements for start up of the Smolt Monitoring Contract for 2010, including finalization of budgets for 2010. Updates were made to projects in Pisces for each program's statement of work. The SMP statement of work had the most updates to go along with changes were made at the project sites/personnel changes since annual reports are no longer necessary, information already included in the FPC annual report for the year. Members of the FPC staff attended training on Pisces at Bonneville Power Administration and were shown new updates and shortcuts that helped in our knowledge of the system.

Produce status reports

All Pisces status report requirements were met for the SMP, CSS and FPC projects for this quarter. All Pisces status report requirements were met for the SMP, CSS and FPC projects for this quarter. Files and reports were uploaded into the Pisces system to Bonneville where required.

Produce annual progress reports.

All Pisces progress reports were completed successfully. During this quarter, the FPC staff began the data summaries and analyses required for the FPC Annual Report.

Regional Coordination, Fish way Inspections/FPAC

During this quarter FPC staff completed the Draft Annual Report of the Adult Facilities Inspection Program. The Draft was provided to the fishway inspectors and posted on the FPC web site for a 45 day regional review.