



FISH PASSAGE CENTER
1827 NE 44th Ave., Suite 240, Portland, OR 97213
Phone: (503) 230-4099 Fax: (503) 230-7559
<http://www.fpc.org/> e-mail: fpcestaff@fpc.org

MEMORANDUM

TO: Fish Passage Center Oversight Board
Brian Lipscomb, CBFWA
Randy Fisher, PSMFC

Michele DeHart

FROM: Michele DeHart

DATE: April 14, 2009

RE: Quarterly Fish Passage Center Report for January – March 2009

Following is the Quarterly Report for the Fish Passage Center for the first quarter of 2009. This report follows the format and content agreed upon by the Fish Passage Center Oversight Board (Oversight Board).

Pisces System Work Elements

Produce environmental compliance documentation

ESA section 10 permit application documents for the Comparative Survival Study and the Smolt Monitoring Program were completed for 2009 sampling and marking activities. In addition permit reporting requirements for 2008 were completed and submitted for these projects. Sampling permits were issued by NOAA and the states prior to the beginning of sampling and marking.

Provide Technical Review

During the first quarter of 2009 the FPC staff developed a written response to a request to review a NOAA sockeye analysis.

Analyze/Interpret data

The FPC staff began data analysis and data summaries of fish passage characteristics and river conditions for the development of the FPC Annual Report for 2008. This includes the development of graphics and data tables summarizing 2008 data in comparison to historical years. In addition, in response to a request from the Shoshone Bannock Tribe the FPC staff reviewed their sockeye analysis and offered technical analytical comments.

The FPC staff responded to 14 data requests which are listed below. These ranged over a wide range of topics and were received from fish management entities and the public. These are listed below as was requested by the Oversight Board meeting.

1. [Responses to list of concerns regarding FPC32.net data entry program](#) - March 31, 2009
2. [Standardized Sample Size requirements for SMP condition sampling and transportation Barge loading data requirements and weight calculations](#) - March 31, 2009
3. [Reduction in spring spill at FCRPS Projects under the Draft 2009 Fish Operations Plan, compared to 2008 Fish Operations Plan](#) - March 27, 2009
4. [Fish Passage Operations 2009](#) - March 24, 2009
5. [Meeting both April 10th needs at Grand Coulee and Chum needs below Bonneville](#) - March 24, 2009
6. [Comparing Yakima PIT tagged fish and acoustic/PIT tagged fish from 2006-2008](#) - March 13, 2009
7. [Libby End of December Draft](#) - March 10, 2009
8. [Reduction in spring spill at Lower Granite, Little Goose, and Lower Monumental dams due to later spring spill start date and earlier initiation of summer spill volumes under the 2008 Biological Opinion](#) - March 5, 2009
9. [Estimated spill volume at IHR under 40%/40% operations and estimated reduction in summer spill at Snake River projects due to termination of spill in August, as presented in the 2008 BiOp](#) - March 5, 2009
10. [Start of sampling at Smolt Monitoring Program Sites.](#) - March 5, 2009
11. [Review of Reservoir Operations 2008/2009.](#) - March 2, 2009

12. [Update Smolt Monitoring Program remote site data entry program upgrade.](#) - February 27, 2009
13. [Review, NOAA, Factors affecting sockeye salmon returns to the Columbia River in 2008.](#) - February 18, 2009
14. [Fish Passage Plan, transportation dates and spill](#) - February 18, 2009
15. [Adult travel times through Bonneville Dam, before and after the operation of Powerhouse 1.](#) - January 29, 2009
16. [FPC use of PITAGIS](#) - January 9, 2009

Develop RME methods and designs

Development of 2010 CSS and SMP proposals

In response to the regional RME review process and time lines suggested by BPA staff, the FPC began working with the Comparative Survival Study Oversight Committee to prepare a draft monitoring design for the CSS in future years.

Sockeye Study Design

The FPC staff responded to requests for technical assistance from the agencies and tribes, reviewing the proposed marking of Snake River sockeye.

New SMP data entry program.

Development, testing and implementation of the new FPC32.net remote data entry program for 2009 was the primary FPC focus in the first quarter, and was the largest commitment of FPC staff time. Beginning in January after initial development of the first version of the FPC 32, which for the first time included fish condition monitoring, the entire FPC staff began beta testing the Program. Each FPC staff tested the program, representing different monitoring sites, entering test data and historical data. Program “bugs” were reported, and resolved with new programming. Throughout this process a new version of the Program was tested daily.

FPC staff travelled to each site to assess hardware capabilities and needs for running the new program. Operating system and hardware requirements were updated where necessary. FPC staff built new computers with touch screen and computerized scales to facilitate the new program. Beta testing of the new program at the FPC offices, by five staff members, was carried out on these site computers.

Because the SMP operates in conjunction with Corps of Engineers sampling, consideration of the COE requirements was a primary objective of FPC work in this quarter. COE District personnel advised that they wanted data collection and recording to remain unchanged at each individual site. To meet the COE objective FPC staff developed individual software tools for each site,

which transforms the standardized data collected at each site through the FPC32 program and parses it into the data fields used at each site, and then to a data base for each site, to maintain the historical Corps process and data at each site. This required considerable effort since each site utilizes different data for COE purposes as determined by the on-site COE biologist.

Prior to sampling four FPC staff travelled to each site, over a three week period to train site personnel on use of the new data entry program including the touch screen program for fish condition data collection. In addition FPC staff traveled to each site on the first day of sampling to assist in use of the new program and touch screen and data transmittal.

Create/manage/maintain database, maintain long term database, maintain SMP/CSS site data

Software tools were developed for each site as requested by individual sites to maintain the individual data bases at each site with the parameters and data fields requested for each site.

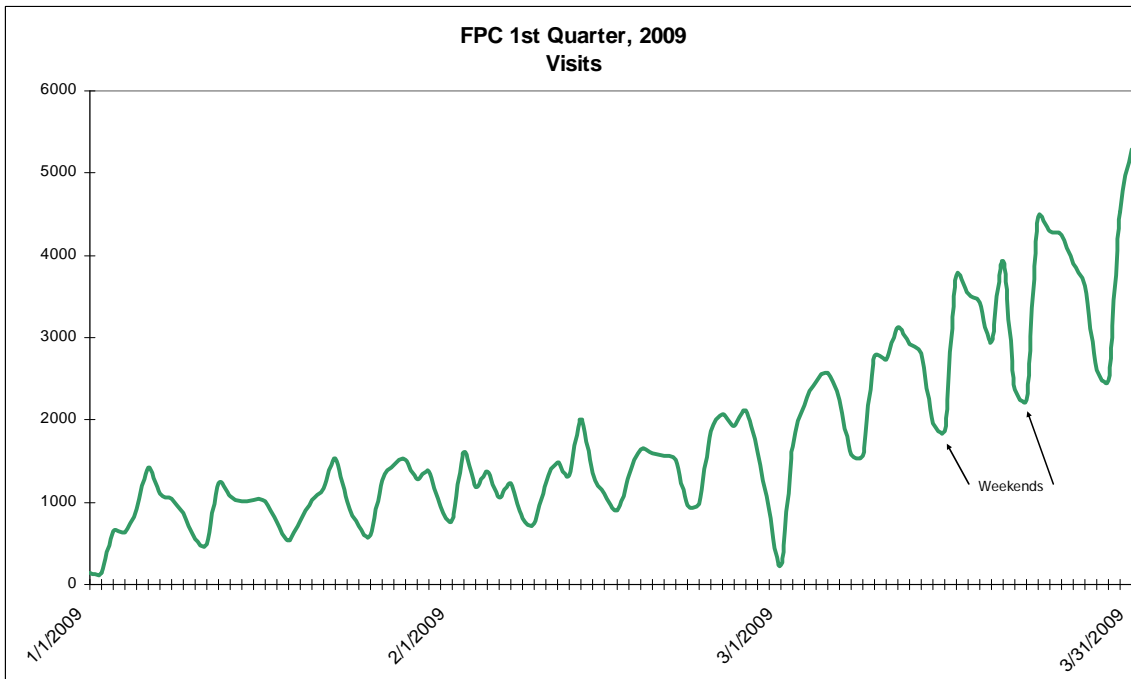
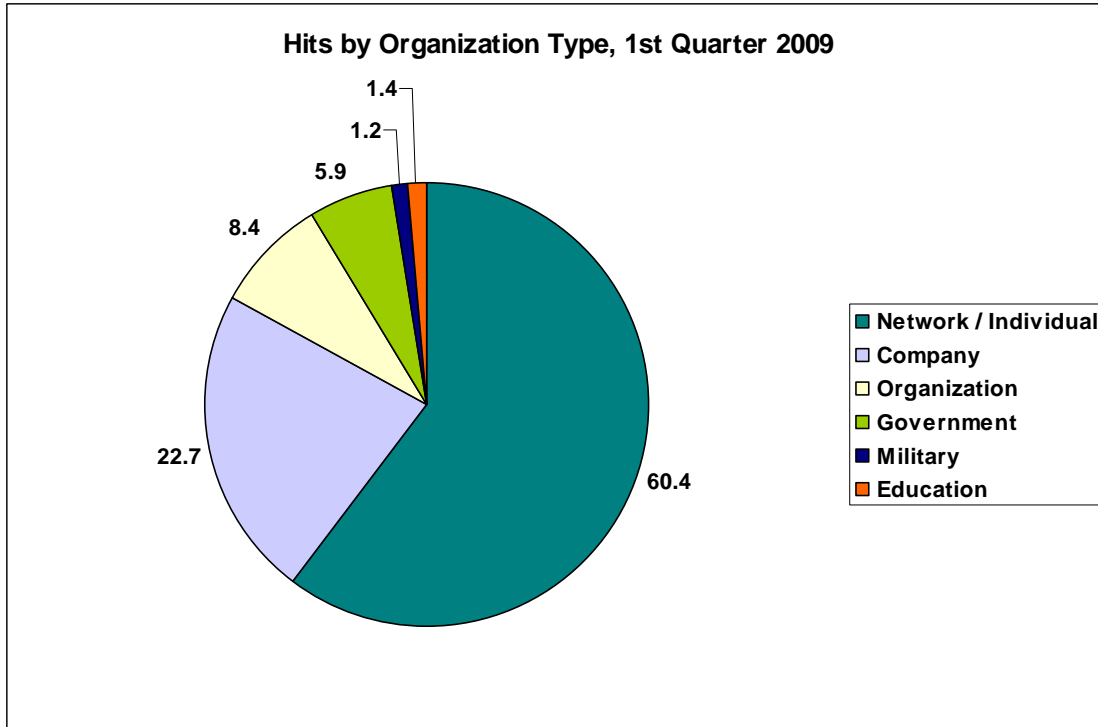
Computer/network updates

Four new computers with touch screens and scales were built, one each for John Day, Bonneville, Lower Monumental and Little Goose projects.

Website updates

Disseminate raw summary and data results

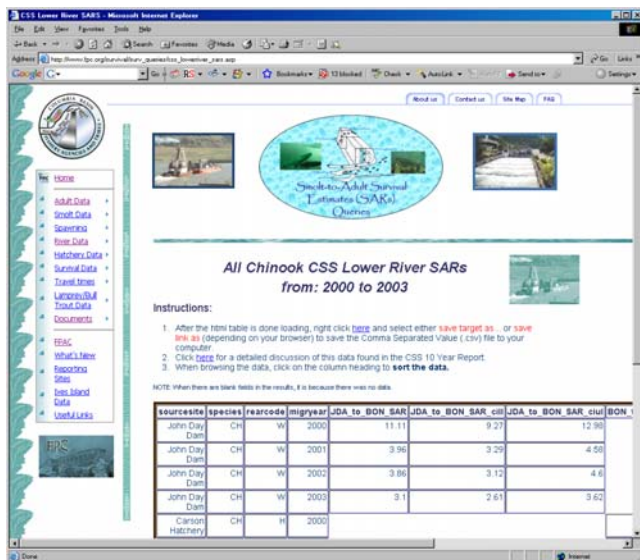
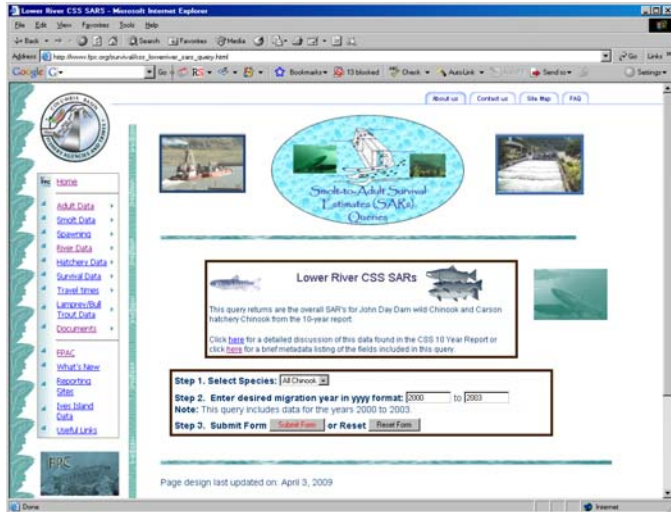
The FPC website is the primary vehicle for data distribution. The FPC site had 2,782,925 successful hits on our website during the 1st quarter of 2009 with 215,069 visits or user sessions. Approximately 81% of the user sessions were from the United States. Approximately 1.5% of the user sessions were international with about 17.5% of unknown origin. During the 1st quarter, we averaged 30,921 hits per day and 1,770 user sessions per day. The average user session length was about 7 minutes. The number of unique visitors was 53,071. Of these unique visitors, 67.8% visited once and 32.2% visited more than once. We log all data requests via the web. The number of requests between 1/1/2009 and 3/31/2009 was 19,758. The following figures illustrate our website use for the 1st quarter of 2009.



Website Updates

The end of year and beginning of year website maintenance was completed. This included updating the web scripts, pages and graphs for the new year. Additionally, work continued on updating the website design and navigation. Under the Survival Data subsite, the Lower River CSS Smolt to Adult survival data query was added.

LOWER RIVER CSS SMOLT TO ADULT SURVIVAL

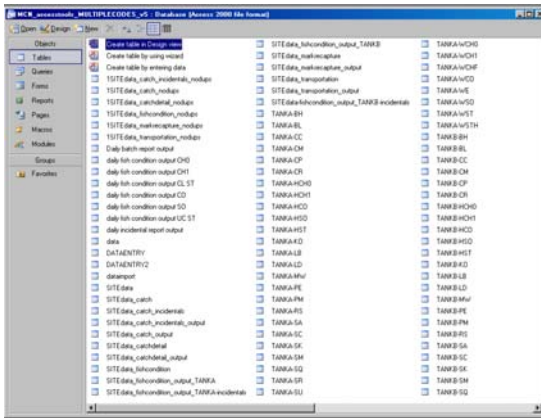
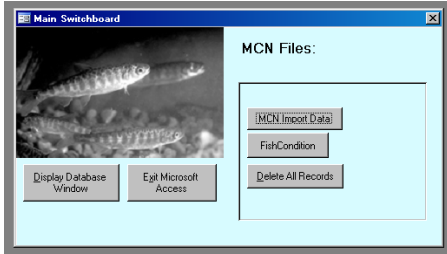


Tools for each SMP site’s long term databases / spreadsheets

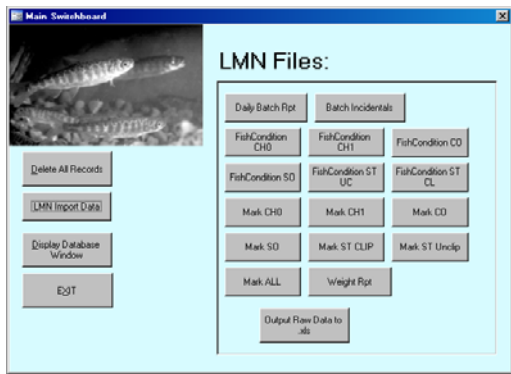
In addition to the development, deployment and training of the new FPC32.net program, FPC staff developed tools for each site to take the data entered into the FPC32.net program and fish condition touch screen, parse it, summarize it, and export it into various spreadsheet and/or database table formats. These tools, developed in Access/Excel, allow the sites to continue maintaining their long term databases and spreadsheets. They also are used to summarize fish sample numbers and weight information needed at the COE transportation sites. Each of the sites’ spreadsheets/databases differ. The daily xml batch file produced by the FPC32.net

program is imported, parsed, queried, summarized and exported into each sites' requested formats. The following graphics are some examples of the various tools and exported site data:

MCNARY TOOLS, METADATA, AND OUTPUT



LMN TOOLS



VARIOUS LMN TOOLS OUTPUTS

	A	B	C	D	E	F	G	H	I	J	K	L	M	N	O	P	Q	R	S	
1		batch	date	mark	temperature	ch1 uc:ent	ch1 uc:cvt	ch1 cl:ent	ch1 uc:ent	ch1 uc:cvt	ch1 cl:ent	st1 uc:ent	st1 uc:cvt	st1 cl:ent	st1 uc:ent	st1 uc:cvt	st1 cl:ent	co:uc:ent	co:uc:cvt	co:cl:ent
2	1	106078	3/19/2009 A		0	5	1	13	46	49	55	4	4	21	6	47	2			
3	2	206078	3/19/2009 B		0	5	16	42	134	141		18			30	2				
4																				
5																				
6																				
7																				

Manage and Administer projects

Budgets for the SMP and CSS were discussed with BPA and the Budget Oversight Group. Budget modifications for the SMP were agreed upon in February and implemented. The FPC worked with agency sub-contractors regarding year end budgets, contract closures and were able to find savings affecting the 2009 budget requirements.

Produce status reports

All Pisces status report requirements were met for the SMP, CSS and FPC projects for this quarter. New statements of work and budgets were developed and uploaded into the Pisces system for 2009. for the CSS and SMP projects.

Produce annual progress reports.

All Pisces progress reports were completed successfully. In addition the FPC staff developed periodic progress report memorandums to FPAC and PSMFC updating the progress on the development and implementation of the new remote data entry program and fish condition monitoring.

Regional Coordination, Fish way Inspections/FPAC

During this quarter, the 2008 draft annual Fish Facilities Inspection report for 2008 was posted on the FPC web site for a 45 day review period.