



# FISH PASSAGE CENTER

847 NE 19<sup>th</sup> Avenue, #250, Portland, OR 97232

Phone: (503) 833-3900 Fax: (503) 232-1259

[www.fpc.org/](http://www.fpc.org/)

e-mail us at [fpcstaff@fpc.org](mailto:fpcstaff@fpc.org)

## MEMORANDUM

TO: Travis Collier, USFWS

FROM: Brandon R. Chockley

DATE: January 19, 2016

RE: 2015 Leavenworth National Fish Hatchery Report

The Fish Passage Center has been marking Chinook from the Leavenworth National Fish Hatchery facility since 1997 as part of the Smolt Monitoring Program (SMP). For purposes of this program, passage data are collected on both the juvenile and adult life stages. The SMP provides information for in-season management of the hydrosystem and post-season analyses to the federal, state, and tribal fishery agencies. We would like to provide an update of some of the information we developed under this study for the Chinook used from the Leavenworth National Fish Hatchery facility in 2015 and past years.

Under the Smolt Monitoring Program, information is collected on the timing, migration speed, and survival of juveniles from the hatchery to McNary Dam. Table 1 below provides estimates of minimum, median, and maximum travel times from each year's release to McNary Dam. Also provided are estimates of the 95% confidence limits around the estimated median travel time.

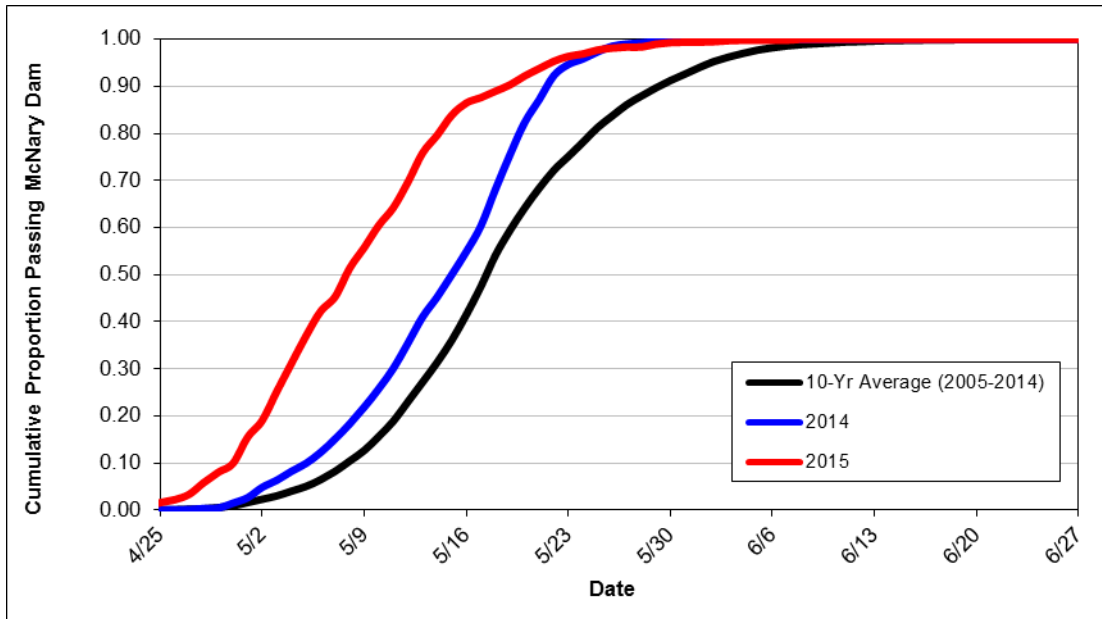
In addition, we are providing estimates of the 10%, 50%, and 90% passage dates of Leavenworth NFH spring Chinook juveniles at McNary Dam for each of the years of tagging (Table 2). Also, Figure 1 is provided as an illustration of how the arrival timing of the 2015 smolt release relates to the 2014 release, as well as the 10-year average arrival timing (2005–2014).

**Table 1.** Leavenworth Hatchery Spring Chinook Travel Times to McNary Dam

Release Date	Migration Year	Travel Time (Days)			95% Confidence Limits	
		Min	Med	Max	Lower	Upper
17-Apr	1997	8.6	28.7	52.2	22.7	41.8
20-Apr	1998	10.3	21.7	55.1	21.2	22.2
19-Apr	1999	6.8	27.8	55.7	27.3	28.1
18-Apr	2000	11.9	36.1	79.2	34.6	36.9
17-Apr	2001	11.3	37.0	72.0	36.9	37.2
22-Apr, 24-Apr	2002	3.6	35.9	64.4	25.9	26.0
21-Apr	2003	5.8	27.6	110.1	27.4	27.7
19-Apr	2004	0.1	25.2	107.2	25.1	25.1
15-Apr	2005	11.9	29.8	116.7	29.4	30.1
17-Apr	2006	22.8	28.5	48.2	28.3	28.8
18-Apr	2007	7.7	30.8	65.1	30.4	31.2
28-Apr	2008	3.9	19.9	55.9	19.8	20.1
28-Apr	2009	8.8	25.4	69.8	24.9	25.7
23-Apr, 26-Apr	2010	8.1	22.2	50.9	21.9	23.0
19-Apr, 20-Apr	2011	9.4	28.2	61.5	27.4	28.6
17-Apr, 18-Apr	2012	6.0	28.8	88.0	28.5	29.1
23-Apr, 24-Apr	2013	6.8	24.8	63.6	24.1	25.2
22-Apr, 23-Apr	2014	5.5	22.0	54.6	21.4	22.6
14-Apr, 15-Apr	2015	8.9	23.8	54.1	23.3	24.7

**Table 2.** Estimated 10%, 50%, and 90% passage dates of Leavenworth NFH spring Chinook at McNary Dam.

Migration Year	10% Passage Date	50% Passage Date	90% Passage Date
1997	1-May	14-May	22-May
1998	3-May	12-May	23-May
1999	7-May	17-May	25-May
2000	12-May	23-May	3-June
2001	15-May	24-May	31-May
2002	11-May	20-May	28-May
2003	7-May	19-May	31-May
2004	3-May	14-May	27-May
2005	5-May	15-May	3-June
2006	11-May	16-May	21-May
2007	7-May	19-May	31-May
2008	13-May	19-May	27-May
2009	16-May	24-May	1-June
2010	10-May	18-May	2-June
2011	7-May	19-May	29-May
2012	5-May	17-May	25-May
2013	8-May	18-May	1-June
2014	6-May	16-May	22-May
2015	1-May	8-May	19-May

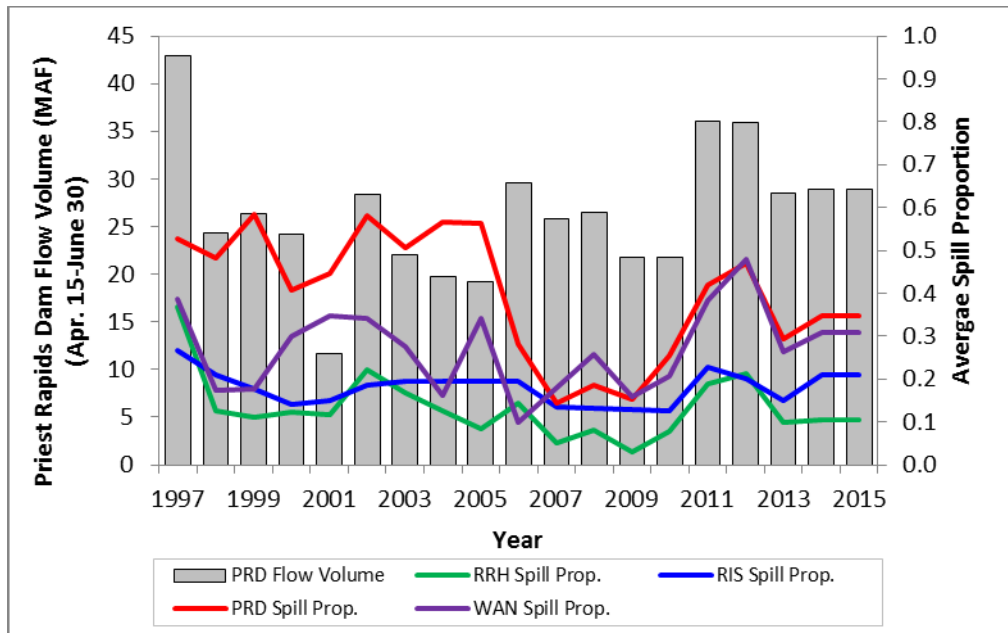


**Figure 1.** Cumulative passage timing of Leavenworth National Fish Hatchery spring Chinook to McNary Dam.

Table 3 below provides estimates of survival from release at the hatchery to McNary Dam, along with the upper and lower confidence limits on these estimates. To put in context the out-migration conditions that these spring Chinook juveniles may have experienced, Figure 2 provides the total spring flow volume (April 15–June 30) for the Upper Columbia River (as measured at Priest Rapids Dam), along with the average spring spill proportions at each of Rocky Reach, Rock Island, Wanapum, and Priest Rapids dams, for each migration year.

**Table 3.** Leavenworth Hatchery Spring Chinook survivals (Release to McNary Dam)

Release Date	Migration Year	Survival	Confidence Limits (95%)	
			Lower	Upper
17-Apr	1997	N/A	N/A	N/A
20-Apr	1998	0.546	0.491	0.602
19-Apr	1999	0.586	0.550	0.622
18-Apr	2000	0.593	0.520	0.667
17-Apr	2001	0.501	0.484	0.517
22-Apr, 24-Apr	2002	0.560	0.553	0.567
21-Apr	2003	0.662	0.655	0.669
19-Apr	2004	0.483	0.473	0.494
15-Apr	2005	0.526	0.500	0.553
17-Apr	2006	0.558	0.531	0.585
18-Apr	2007	0.593	0.571	0.615
28-Apr	2008	0.571	0.528	0.614
28-Apr	2009	0.481	0.442	0.520
23-Apr, 26-Apr	2010	0.662	0.603	0.721
19-Apr, 20-Apr	2011	0.426	0.383	0.469
17-Apr, 18-Apr	2012	0.590	0.551	0.629
23-Apr, 24-Apr	2013	0.674	0.537	0.811
22-Apr, 23-Apr	2014	0.568	0.518	0.617
14-Apr, 15-Apr	2015	0.498	0.426	0.569



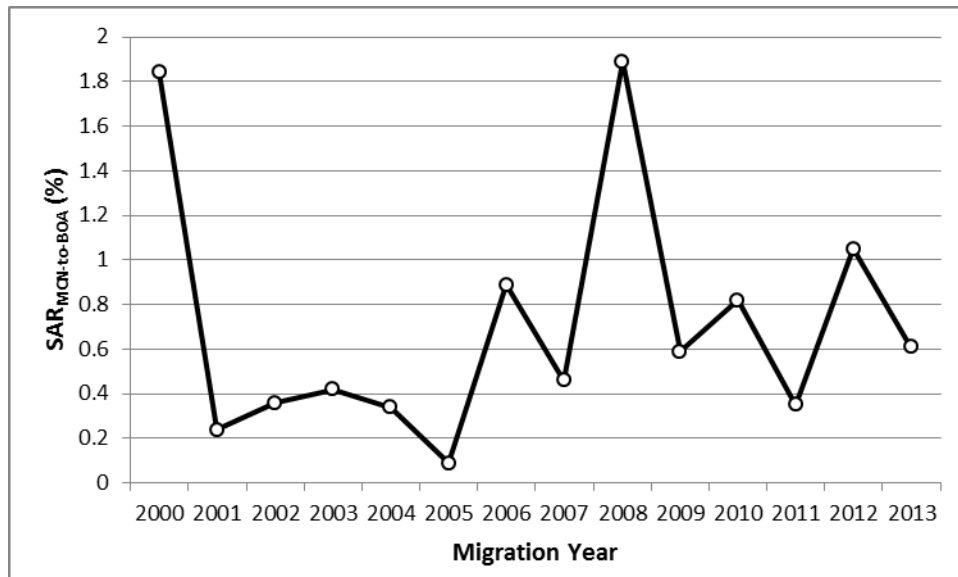
**Figure 2.** Total spring flow volume in the Upper Columbia River (at Priest Rapids Dam) and average spill proportion at Rocky Reach, Rock Island, Wanapum, and Priest Rapids dams. Spring period is April 15–June 30.

Finally, Table 4 contains estimates of SARs for MCN-to-BOA (without jacks). These SAR estimates were taken from Appendix B of the 2015 CSS Annual Report, which can be downloaded from the FPC webpage: [www.fpc.org/documents/CSS.html](http://www.fpc.org/documents/CSS.html). Figure 3 is provided to illustrate the time series of the SAR estimates over the years of available data for Leavenworth NFH spring Chinook.

**Table 4.** Leavenworth NFH Spring Chinook SARs (without jacks) from CSS.

Release Date(s)	Migration Year	Overall SAR <sub>MCN-to-BOA</sub>
18-Apr	2000	1.84
17-Apr	2001	0.24
22-Apr, 24-Apr	2002	0.36
21-Apr	2003	0.42
19-Apr	2004	0.34
15-Apr	2005	0.09
17-Apr	2006	0.89
18-Apr	2007	0.46
28-Apr	2008	1.89
28-Apr	2009	0.59
23-Apr, 26-Apr	2010	0.82
19-Apr, 20-Apr	2011	0.35
17-Apr, 18-Apr	2012	1.05
23-Apr, 24-Apr	2013 <sup>A</sup>	0.61

<sup>A</sup> Migration year 2013 is incomplete with Age 2-salt adult returns through 9/14/2015.



**Figure 3.** Overall SAR<sub>MCN-to-BOA</sub> (without jacks) for Leavenworth NFH spring Chinook (2000–2012). Migration year 2012 is incomplete for yearling Chinook, with Age 2-salt adult returns through 9/14/2015.

We hope that the information we have provided regarding the use and application of information from the marked groups over the last several years is of some use to you. If you would like any additional information regarding these releases please feel free to contact us.

c: Pete Hassemer, IDFG  
Bill Tweit, WDFW  
Jay Hesse, Nez Perce  
Tom Rien, ODFW  
Howard Schaller, USFWS  
Erik Merrill, NPCC  
Jim Ruff, NPCC  
Tom Kahler, Douglas County PUD  
Greg Mackey, Douglas County PUD  
FPAC